

# Sail Away

Quilt by Lucy A. Fazely & Michael L. Burns

Finished Quilt: 38" x 40" - Center Panel: 18" x 20"

**Sail Away** fabrics by Classic Cottons - Style #3649

**Fabric Requirements:** Based on 44" wide fabric

One lighthouse panel (#8309-22 Blue), about 2/3 yard

fat eighth overall lighthouse print (#8310-22 Blue)

fat eighth postcard print (#8311-22 Blue)

fat eighth map print (#8316-22 Blue)

fat eighth flag print (#8314-2 Blue)

7/8 yard navy sailboat print (#8313-22 Blue)

1/2 yard red sailboat print (#8313-1 Red)

1/3 yard cream sailboat print (#8313-9 Cream)

1/2 yard seagull print (#8312-2 Blue)

1/3 yard red rope print (#8315-1 Red)

1/3 yard cream rope print (#8315-9 Cream)

1-1/4 yards fabric for backing (#8310-22 Blue overall lighthouse print suggested)

42" x 43" quilt batting

**Cutting Directions:** All measurements based on a 1/4" seam allowance.

From the **panel** fabric:

Trim large panel 1/4" past the outside edge (see NOTE below)

From the **overall lighthouse, postcard, map and flag** fabrics:

Fussy cut one 8-1/2" square of each with motifs centered

From the **navy sailboat** fabric:

Cut one 3-1/2" x 44" strips then recut into twelve 3-1/2" squares

Cut eight 2-1/2" x 44" strips

From the **red sailboat** fabric:

Cut one 3-1/2" x 44" strips then recut into four 3-1/2" squares

Cut four 2" x 44" strips

From the **cream sailboat** fabric:

Cut four 2" x 44" strips

From the **seagull** fabric:

Cut four 2-1/2" x 44" strips

From the **red rope** fabric:

Cut four 2" x 44" strips

From the **cream rope** fabric:

Cut four 2" x 44" strips

NOTE: The large lighthouse panel should be trimmed to approximately 18-1/2" x 20-1/2". If this varies, do not worry. All fabric strips will be trimmed to the size of your panel so it does not matter if it is slightly different.

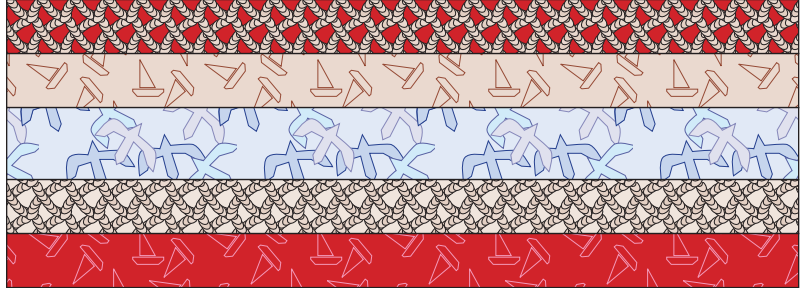
# Sail Away

Page 2

## Star & Moon Sections:

1. Stitch a 2-1/2" x 44" navy sailboat strip to right and left sides of large panel. Press and trim excess. Add a 2-1/2" x 44" navy sailboat strip to top and bottom of panel. Press and trim excess.

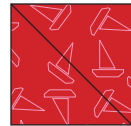
2. Make a panel of 44" long strips, by sewing them in the following order: 2" red rope, 2" cream sailboat, 2-1/2" seagull, 2" cream rope then 2" red sailboat. Make a total of four these panels.



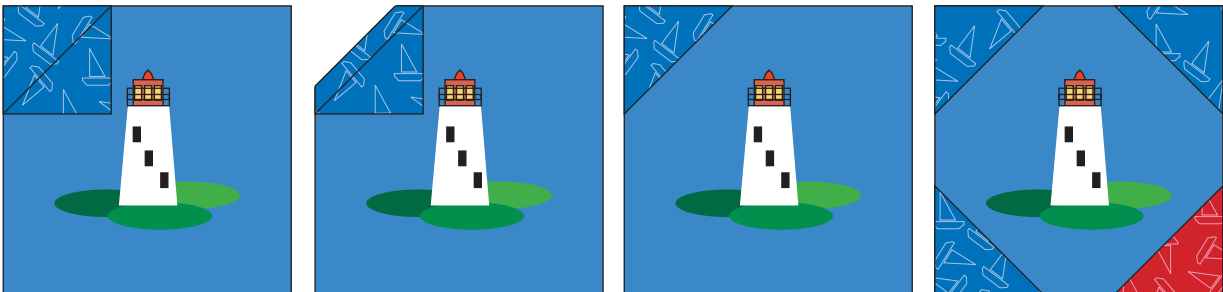
3. Trim two pieced panels to the width of the quilt center (approximately 22-1/2").

4. Sew the remaining untrimmed panels to the right and left sides of quilt center, with red rope strip on the outside. Press and trim excess.

5. Draw a diagonal line across the wrong sides of each of the 3-1/2" red and navy sailboat squares.



6. Lay a marked navy sailboat square on the upper left hand corner of the 8-1/2" overall lighthouse square. Stitch along marked line. Trim seam to about 1/4". Press seam to navy print. Add a red sailboat quick corner to the bottom right corner and a navy sailboat corner to the remaining two corners.



7. Add three navy and one red quick corner triangle to each of the other three 8-1/2" novelty print squares being mindful of the placement of the red triangle as shown in the quilt diagram.

8. Add the 8-1/2" novelty squares with corners to each end of the two trimmed pieced panels. Be careful with placement of the red sailboat strip closest to the quilt center and the red sailboat triangle on the inside corners.

9. Layer top, batting and backing then baste. Quilt as desired. Trim excess backing and backing even with quilt top.

10. Make binding from four 2-1/2" x 44" navy sailboat strips. Add binding.